



# JEREMY JAMES

HARLEY STREET, MARYLEBONE VILLAGE, LONDON W1



## PRICE

£1,750,001

## TENURE

Leasehold - 33 Years

## SERVICE CHARGE

Approx £9,000 per annum

## GROUND RENT

£39 per annum

## LOCAL AUTHORITY

City of Westminster

## COUNCIL TAX BAND

C

33 New Cavendish Street  
London,  
W1G 9TS

020 7486 4111  
[jeremyjames@jeremy-james.co.uk](mailto:jeremyjames@jeremy-james.co.uk)



# JEREMY JAMES

## HARLEY STREET, MARYLEBONE VILLAGE, LONDON W1



### DESCRIPTION

Stylishly refurbished three bedroom apartment available in this sought after portered block, with passenger lift and underground parking. This impressive and well-proportioned first floor apartment has been refurbished to an exacting standard, benefitting from high quality contemporary fittings and finishes, parquet flooring and an abundance of natural light. The apartment, of approximately 1,077 sq.ft.(100 sq.m.) offers principal bedroom with generous storage, en-suite shower room, two further double bedrooms, family bathroom, fully fitted sleek kitchen with breakfast counter appliances and doors to balcony, opening to large reception / dining room. The apartment lends itself well to modern living in Central London.

### AMENITIES

3 Bedrooms

2 Bathrooms

Moments from Marylebone High Street

Porter

Garage Space

Lift

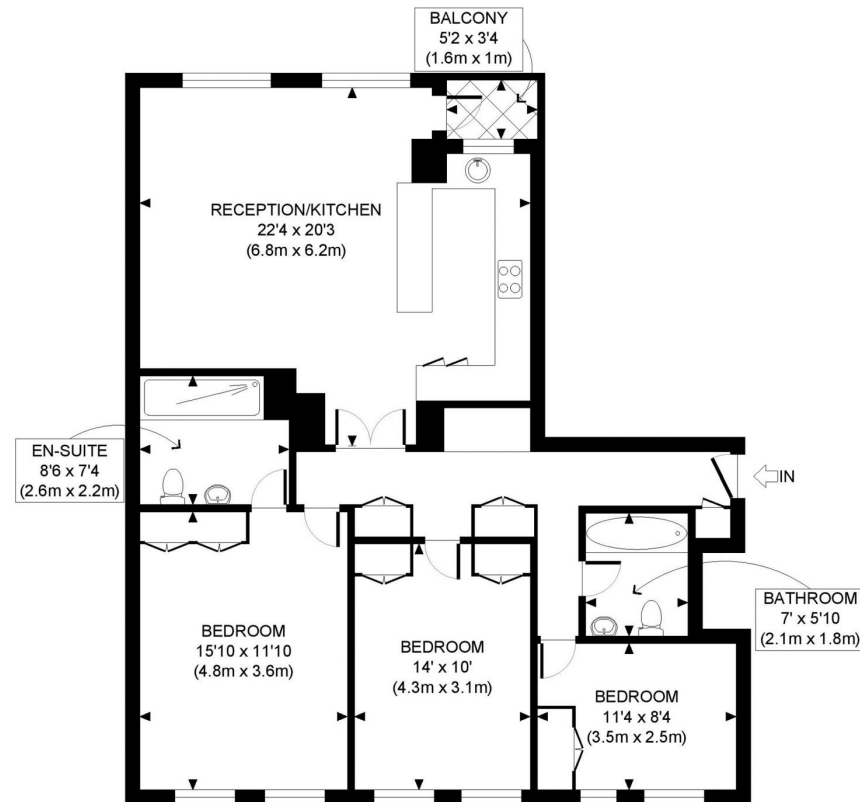
### LOCATION

The property is located on the East side of Harley Street at the junction with Queen Anne Street. The shopping Facilities of Marylebone High Street and Oxford Street together with the open spaces of Regents Park are within close proximity.

33 New Cavendish Street  
London,  
W1G 9TS

020 7486 4111

[jeremyjames@jeremy-james.co.uk](mailto:jeremyjames@jeremy-james.co.uk)



FIRST FLOOR  
GROSS INTERNAL  
FLOOR AREA 1077 SQ FT



APPROX. GROSS INTERNAL FLOOR AREA: 1077 SQ FT/ 100 SQM

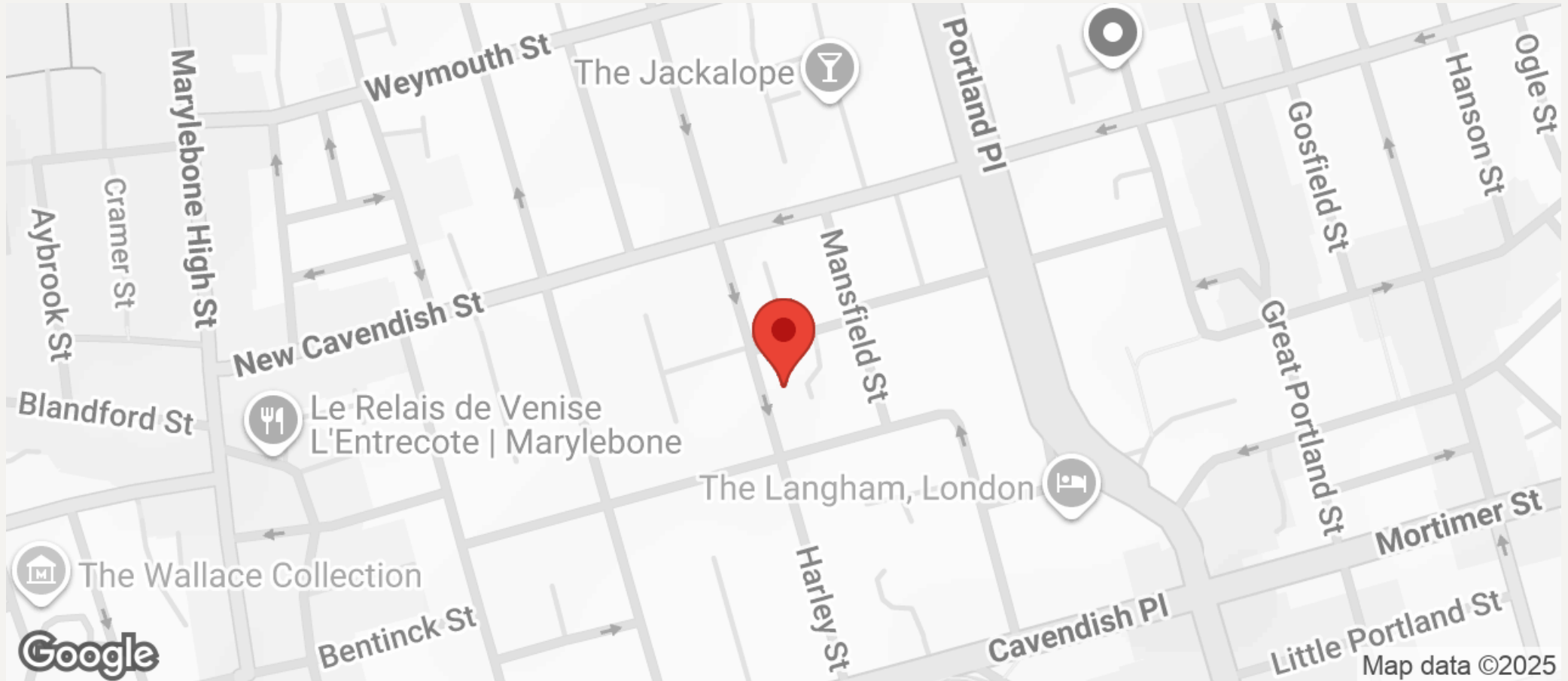
**PROPERTY PHOTO PLANS**.COUK  
ONE STOP SHOP FOR PROPERTY MARKETING

This plan is for illustrative purposes only and should be used as such by any prospective client. Whilst every attempt has been made to ensure the accuracy of the Floor Plan contained here, measurements of the doors, windows, rooms and any other items are approximate and no responsibility is taken for any errors, omissions, or misstatement. The services, systems and appliances shown have not been tested and no guarantee as to the operability or efficiency can be given.



JEREMY JAMES

HARLEY STREET, MARYLEBONE VILLAGE, LONDON W1



All negotiations are subject to contract. The Agents are not authorised to make or accept any contractual offer unless prior written notification to the contrary has been given on behalf of the client. In no other case whatsoever are the Agents (or any employee or sub-agent) authorised to make or give any representation or warranty on behalf of any party, and whilst information and particulars are given in all good faith intending purchasers and lessees must satisfy themselves independently as to the accuracy of all matters upon which then intend to rely. Measurements or distances referred to are approximately only. We have not carried out a survey or tested the services, appliances or specific fittings.

33 New Cavendish Street  
London,  
W1G 9TS

020 7486 4111  
[jeremyjames@jeremy-james.co.uk](mailto:jeremyjames@jeremy-james.co.uk)