

## HEALTHCARE LET



### 25 DEVONSHIRE PLACE, MARYLEBONE VILLAGE, LONDON W1 £37,350 PER ANNUM

A unique opportunity to acquire a first floor medical suite in the heart of the medical district.

#### AMENITIES

- First Floor
- One Consulting Room Plus Mezzanine
- Shared Waiting Room
- EPC: C
- In the heart of the medical district
- Audio entry phone system



### HARLEY STREET, MARYLEBONE VILLAGE, LONDON W1 £44,270 PER ANNUM

Ground floor rear suite of approximately 466 sq.ft. (43.3 sq.m.), in this extremely attractive Grade II Listed Georgian House, situated in the heart of the 'Medical District'.

#### AMENITIES

- Ground Floor
- 2 rooms
- In the heart of the Marylebone
- Communal Waiting Room

**UNDER OFFER**



### 28 WEYMOUTH STREET, LONDON W1 £49,128 PER ANNUM

A unique opportunity to acquire a 1st floor medical suite in the heart of the medical district. The suite having a net floor area of approximately 552 sq ft (51.2 sq m).

#### AMENITIES

- First Floor
- 552 sq ft (51.2 sq m)
- EPC: C
- 2 Rooms
- Shared Waiting Room
- Grade II listed

## HEALTHCARE LET



### **MONTAGU MANSIONS, LONDON W1U** **£50,000 PER ANNUM**

Dental surgery to rent London W1, the room measures approximately 19 ft by 14.04 ft. The rent is exclusive of rates and service charge.

#### **AMENITIES**

- Communal Waiting Room
- Fully Fitted Dental Surgery
- 1 Room
- Ground Floor



### **46 HARLEY STREET, LONDON W1** **£50,000 PER ANNUM**

The available accommodation comprises of two rooms on the first floor.

#### **AMENITIES**

- First Floor
- In the heart of the medical district
- 2 Rooms
- EPC: D

**UNDER OFFER**



### **25 UPPER WIMPOLE STREET, LONDON W1G** **£55,000 PER ANNUM**

This dental room is located on the ground floor having an area of approximately 305 Sq ft / (28 Sqm).

#### **AMENITIES**

- One Room
- Ground Floor
- In the heart of the medical district
- EPC D
- The rent includes business rates and service charge.

## HEALTHCARE LET



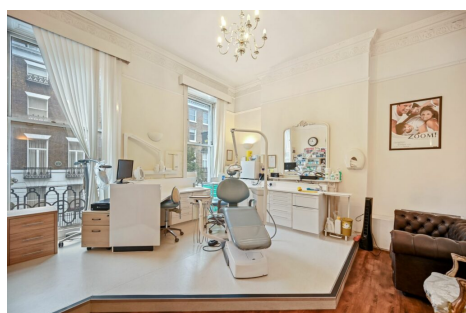
**LET AGREED**

### 8 UPPER WIMPOLE STREET, MARYLEBONE, LONDON W1 £59,500 PER ANNUM

Jeremy James and Company are delighted to bring to the market this unique property situated in the heart of the Marylebone Village, London W1.

#### AMENITIES

- Ground floor
- Shared Waiting Room
- Period Features
- Two Consulting Rooms
- In the heart of the medical district
- Manned Reception



### 9 UPPER WIMPOLE STREET, LONDON W1G £60,000 PER ANNUM

This consulting room is located on the first floor having an area approximately 270 sq ft / 25 sqm.

#### AMENITIES

- One Room
- First Floor
- In the heart of the medical district
- EPC: F
- The rent includes of rates and service charge.
- Manned Reception



**UNDER OFFER**

### 62 WIMPOLE STREET, LONDON W1G £66,000 PER ANNUM

Medical suite comprising of four rooms approximately 939 sq ft (87 sq m). The building benefits from a shared waiting room and manned reception.

#### AMENITIES

- Ground Floor
- Four Rooms
- Shared Waiting Room
- In the heart of the medical district

## HEALTHCARE LET



UNDER OFFER

### DEVONSHIRE PLACE, HARLEY STREET MEDICAL DISTRICT, LONDON W1. £70,000 PER ANNUM

Second floor suite available in this attractive period medical building.

#### AMENITIES

- Passenger Lift
- Second Floor
- Patient waiting room
- Entryphone system
- 4 rooms



UNDER OFFER

### HALLAM STREET, MARYLEBONE VILLAGE, LONDON W1 £145,000 PER ANNUM

Unique opportunity to rent this lower ground floor medical suite. The property is located on the west side of Hallam Street between the junctions with Devonshire Street and Weymouth Street. Both Great Portland Street and Regents Park underground stations are within close proximity. Access to the A40 (M40) is also very close by.

#### AMENITIES

- Lower Ground Floor
- Self Contained
- A unique opportunity to acquire
- 4,181 sq ft (389 sq. m)
- In the heart of the Medical District



LET AGREED

### UPPER WIMPOLE STREET, MARYLEBONE VILLAGE, LONDON, W1 £142,500 PER ANNUM

Jeremy James and Company are delighted to bring to the market this unique property situated in the heart of the Marylebone Village, London W1.

#### AMENITIES

- Ground and First Floor
- High Ceilings
- Medical on the ground floor
- 2,442 Sq.ft
- Terrace



## HEALTHCARE LET



**LET AGREED**

**HARLEY STREET, HARLEY STREET MEDICAL DISTRICT,  
LONDON W1G  
£165,317 PER ANNUM**

The medical accommodation is arranged over the ground and lower ground floor.

### **AMENITIES**

- Ground and Lower ground floor
- In the heart of the medical district
- Ground floor: 3 rooms
- Lower Ground Floor: 3 rooms
- EPC: D