

## RESIDENTIAL LET



LET AGREED

### UPPER WIMPOLE STREET, MARYLEBONE VILLAGE, LONDON, W1 £750 PER WEEK

Fabulous one bedroom flat situated a short walk away from Marylebone High Street with it's boutiques, popular restaurants and cafes. Bond Street Underground Station is close by as are the open spaces of Regents Park.

#### AMENITIES

- Spacious
- 2nd Floor
- Furnished
- EPC Rating D



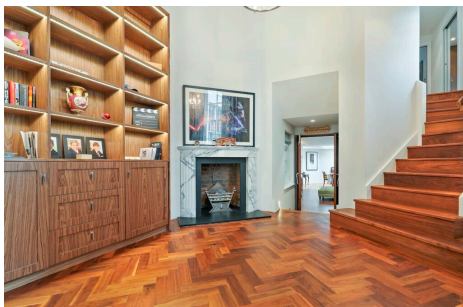
LET AGREED

### BEAUMONT STREET, LONDON, W1 £750 PER WEEK

A newly decorated two bedroom flat situated in the heart of Marylebone, a short walk to Marylebone High Street with its exclusive boutiques, bustling restaurants, cafes and bars.

#### AMENITIES

- Two bedrooms
- Unfurnished
- Newly Decorated
- Bright
- EPC:E



UNDER OFFER

### WIMPOLE STREET, MARYLEBONE VILLAGE, LONDON, W1 £798 PER WEEK

This interior designed two bedroom apartment is located on Wimpole Street and is approximately 1,295 sq ft (120 sq m). The apartment comprises of a spacious entrance hall, which benefits from high ceilings. The two bedrooms also benefit from en suite bathrooms. Additionally there is a reception room, study and cloakroom. A delightful duplex apartment on the ground and first floor of a beautiful period house in prime central Marylebone.

#### AMENITIES

- Wood Floors
- Magnificent Entry Hall
- Two Bedrooms and Study
- Energy Rating: C
- Property comes unfurnished

## RESIDENTIAL LET



LET AGREED

### WEYMOUTH STREET, MARYLEBONE VILLAGE LONDON W1 £900 PER WEEK

A bright newly refurbished two-bedroom apartment located on the third floor in the heart of Marylebone Village.

#### AMENITIES

- Third Floor
- Two Bedrooms
- 1 Bathroom
- Newly Refurbished
- EPC B



LET AGREED

### WESTMORELAND STREET, MARYLEBONE VILLAGE LONDON W1 £950 PER WEEK

An immaculate contemporary two bedroom/ two bathroom apartment in period block, offers stylish interiors and an enviable location, moments from the boutiques and eateries of Marylebone High Street.

#### AMENITIES

- 2 Bedrooms
- 2 Bathrooms
- Refurbished Apartment
- Lift
- Hard Wood Floors Throughout
- EPC: D



LET AGREED

### WIMPOLE STREET, MARYLEBONE VILLAGE, LONDON W1 £975 PER WEEK

This two-bedroom apartment approximately 964 sq ft (90 sq m) located on the third floor and served by a passenger lift. The apartment comprises of two double bedrooms, both bedrooms benefiting from en suite bathrooms, reception room, kitchen and cloakroom.

#### AMENITIES

- Lift
- 2 Bedrooms
- 2 Bathrooms
- Moments from Marylebone High Street

## RESIDENTIAL LET



LET AGREED

### WIMPOLE STREET, MARYLEBONE VILLAGE, LONDON W1 £1,200 PER WEEK

A newly decorated two bedroom flat situated in the heart of Marylebone.

#### AMENITIES

- First Floor
- Passenger Lift
- Heating and Hot Water included
- 2 Bedrooms
- 2 Bathrooms
- Furnished



LET AGREED

### UPPER WIMPOLE STREET, MARYLEBONE VILLAGE, LONDON W1 £1,400 PER WEEK

This amazing recently renovated two bedroom flat with magnificent high ceilings is absolutely a MUST to view. The flat boasts wood flooring throughout and a lift with direct access to the flat.

#### AMENITIES

- Two Bedrooms
- Two Bathrooms
- High specification refurbishment
- High ceilings and windows
- Wooden flooring throughout
- Passenger Lift



LET AGREED

### DEVONSHIRE PLACE, MARYLEBONE VILLAGE, LONDON W1 £1,751 PER WEEK

This three bedroom apartment is approximately 1,842 sq ft (171 sqm) located on the ground floor and first floor. The ground floor comprises of entrance hall, reception room, office, cloakroom, kitchen.

#### AMENITIES

- Three Bedrooms
- Three Bathrooms
- Unfurnished
- High Cellings
- EPC: D
- In the heart of the Marylebone Village

## RESIDENTIAL LET



UNDER OFFER

### UPPER WIMPOLE STREET, MARYLEBONE, LONDON W1 £3,250 PER WEEK

Magnificent three double bedroom duplex apartment newly renovated to an extremely high specification offering an abundance of storage and outside space over three patios.

#### AMENITIES

- 3 Bedrooms
- 3 Bathrooms
- Renovated to an extremely high standard
- Several outside spaces
- Original features remain with high ceilings
- Energy Rating C